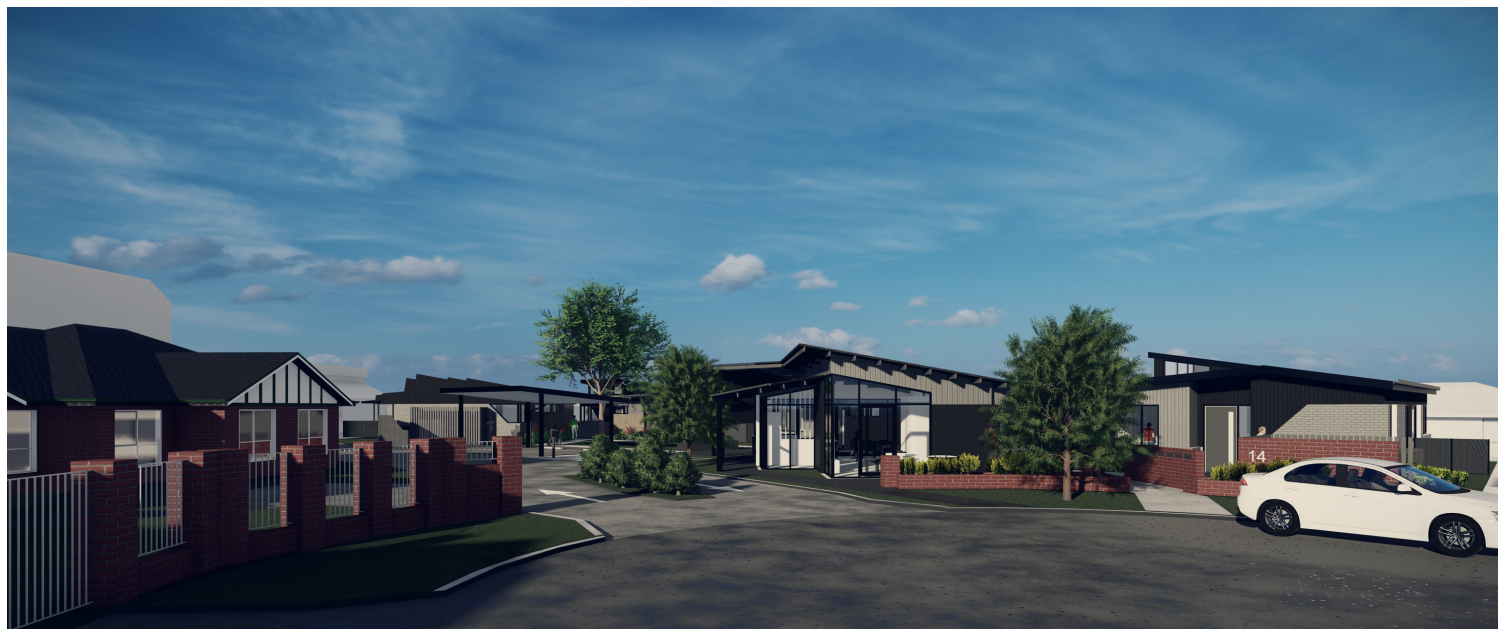


# Expression of Interest

## NOW OPEN

### Kambora Court, Lavington NSW



Support



Living



Community

Construction of disability-accessible properties has begun in early 2021 at Kambora Court, Lavington NSW.

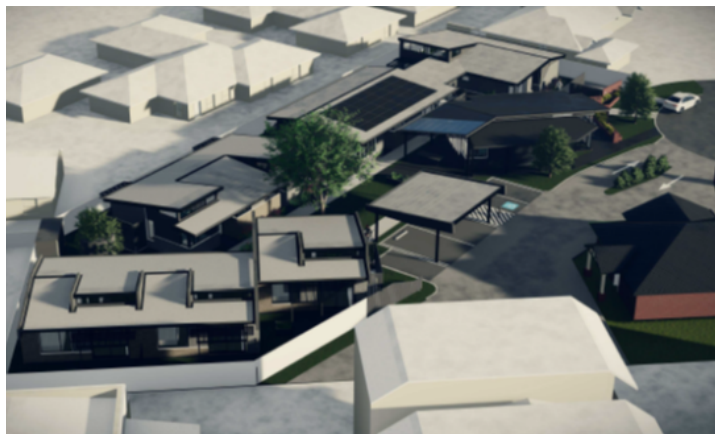
This exciting new development is designed to promote the needs of residents, whilst increasing accessibility to facilities, transport, and community inclusion activities.

**Expressions of Interest (EOI)** are currently open for any local persons with disabilities who are looking to find a house to make a home with Mercy Connect supporting them.

# Kambora Court, Lavington NSW

It is proposed that the Kambora Court site development will comprise of:

- 2 x two-bedroom Supported Independent Living units with carers' accommodation;
- 1 x social hub with administrative office space, communal kitchen, lounge, dining and patio area and an overnight accommodation room;
- 5 x one-bedroom self-contained dwellings;
- New two-way access and egress from Kambora Court, and circulation area including five car-spaces and bus drop-off and pick-up; and,
- Landscaping and pedestrian pathways and fencing.



## What next?

If you are interested in our new accommodation options, please send your Expression of Interest (EOI) to:

Suzie Hogan

P: 02 6043 3500

E: [enquiries@mercyconnect.org.au](mailto:enquiries@mercyconnect.org.au)

## Factors to consider if you are interested in applying

- The applicant is 18 years or over.
- The applicant is prepared to sign (or for a representative to sign) a Residential Agreement and Service Agreement.
- Supported accommodation is available for NDIS participants.

