

# Lavington NSW - 5 Person Group Home



***Vacancy!***

This purpose-built property is owned and staffed by Mercy Connect. The house opened in 2008 for women with disabilities.

It offers 24 hours of day care with a support team who have extensive knowledge and skills to work with people with disabilities.

Tenants receive support tailored to their needs and enjoy activities that enhance independence and increase involvement in the community.



**Support**



**Living**



**Community**

# Lavington, NSW - 5 Person Group Home

This brick veneer home has five large bedrooms and two shared bathrooms that are recently renovated. There is a large open living area with a kitchen, dining area and two living rooms.

The backyard has a vegetable garden on the top level and a ramp going down to the lower level with a BBQ area.

## Accessibility

The house includes wheelchair accessibility.

## Current Support Model

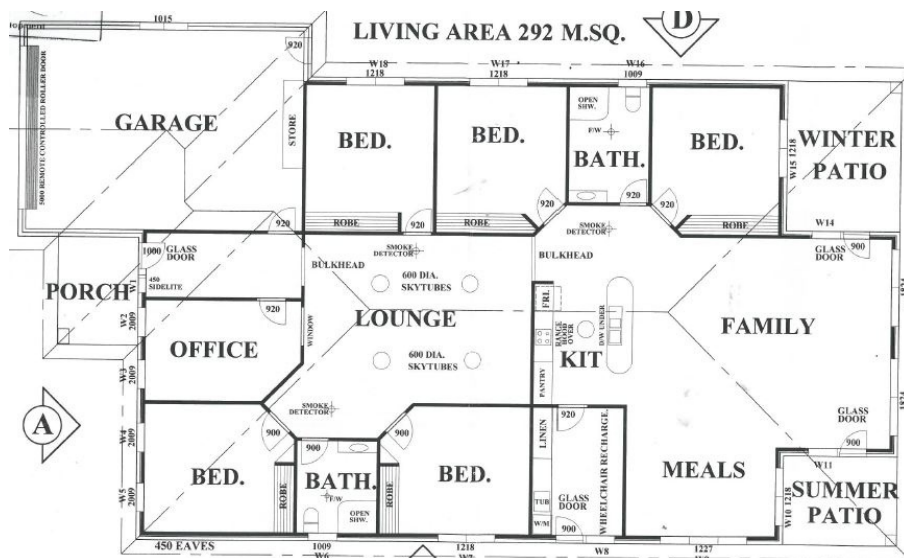
Support is provided 24/7 with an active night. Experienced staff are male and female.

## Tenant's Demographic

Current tenants age from 30 - 46 and are all females.

## Location

Located in Lavington, NSW. The house is accessible to shopping and community centres and, public transport. A vehicle is located at the property.



## Factors to consider if you are interested in applying

- The applicant is 18 years or over.
- The home is suitable for participants who have disabilities.
- The applicant is prepared to sign (or for a representative to sign) a Residential Agreement and Service Agreement.
- Eligible for Supported Independent Living (SIL) under the NDIS.
- Supported accommodation is available for NDIS participants.
- Vacancy available 2021.

## What next?

If you are interested in this property contact:

Suzie Hogan

P: 0498 987 032

E: [enquiries@mercyconnect.org.au](mailto:enquiries@mercyconnect.org.au)

