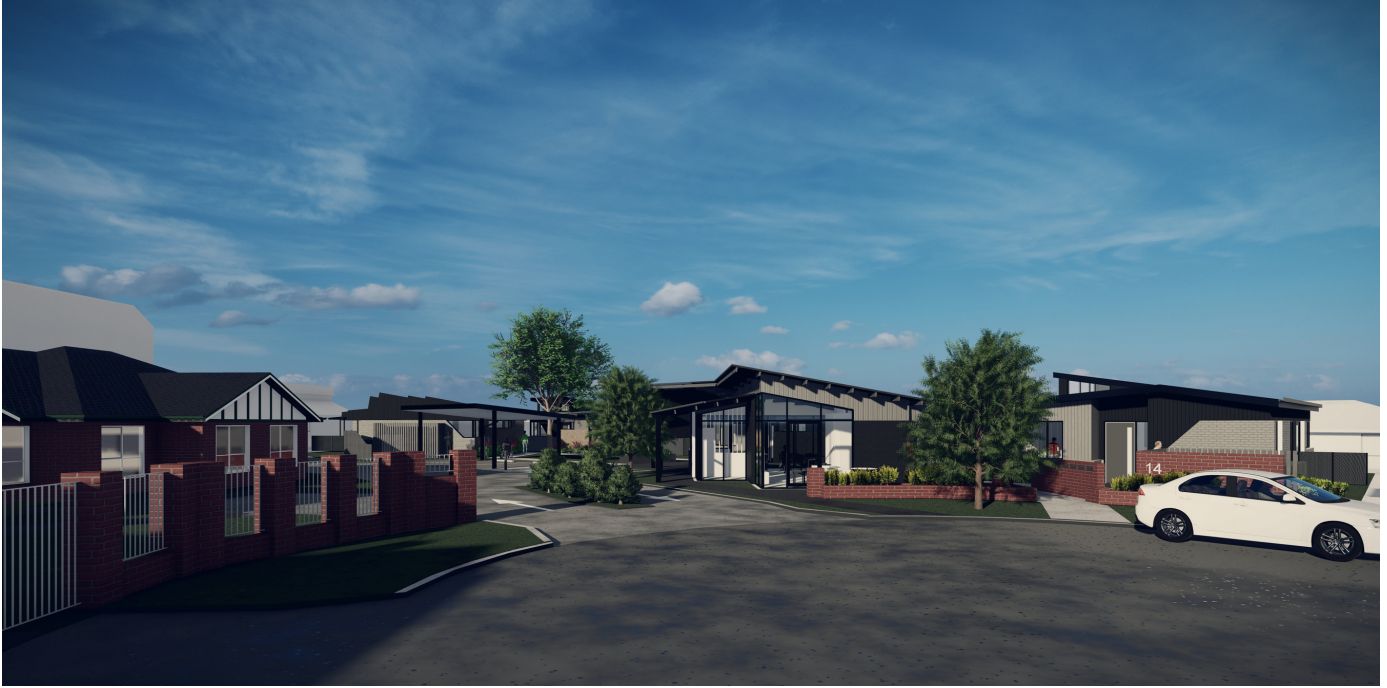


Supported Independent Living (SIL) 4 - Vacancies Kambora Court, Lavington NSW



Support



Living



Community

The brand new development features a social hub with administrative office space, communal kitchen, lounge, dining and patio area and an overnight accommodation room, Two-way access & egress from Kambora Court, parking and bus drop off and pick up and Landscaping and pedestrian pathways and fencing.

This exciting new development is designed to promote the needs of residents, whilst increasing accessibility to facilities, transport, and community inclusion activities.

Kambora Court, Lavington NSW

Kambora Court vacancy includes a 1 bedroom located within the two-bedroom supported independent living units with carers accommodation.

Suitability for this vacancy is open to females who are working towards independence and aged between 18-30 years old.

Tenants receive support tailored to their needs and enjoy activities that enhance independence and increase involvement in the community.

Support Needs

Low -moderate

Current Support Model

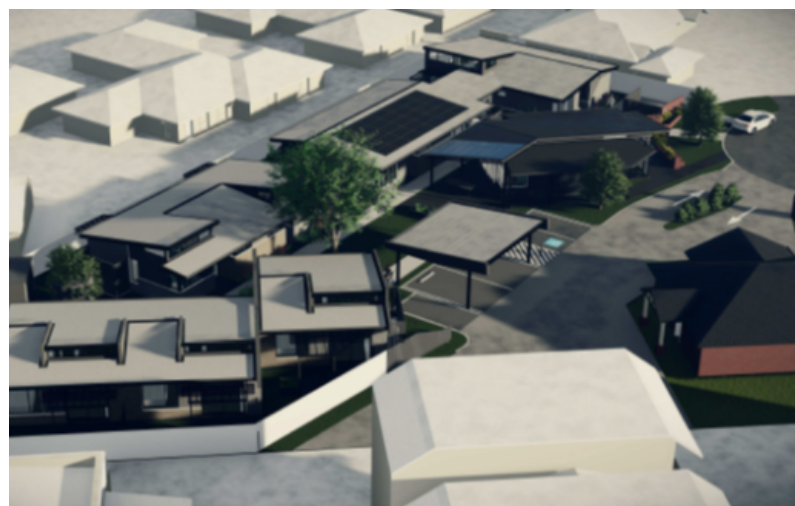
Support is provided 24/7 with sleepover. Experienced staff are male and female.

Tenant's Demographic

Current tenants are female and age from 21- 60

Location

Located in Lavington, NSW. The house is accessible to shopping and community centres and, public transport. A vehicle is located at the property.



Factors to consider if you are interested in applying

- The applicant is female and 18 years or over.
- The applicant is prepared to sign (or for a representative to sign) a Residential Agreement and Service Agreement.

Supported accommodation is available for NDIS participants.

What next?

If you are interested in our new accommodation options, please send your Expression of Interest (EOI) to:

Suzie Hogan - **P:** 02 6043 3500 or **E:** enquiries@mercyconnect.org.au

