



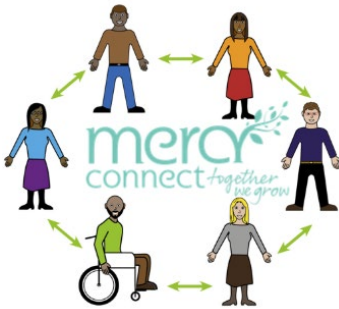
# Participant Advisory Group

## Position Description

### Easy Read

---

#### About the role



You will join a group that helps Mercy Connect make our services better.



You will share your ideas and experiences as a person living with disability



Your ideas will help us improve the way we support people

## Job Title

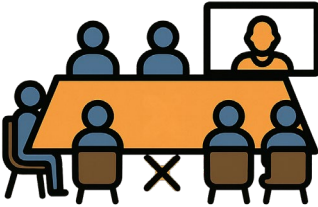
Participant Advisory Group Member



## Location

Thurgoona or

Online



## Who Supports you

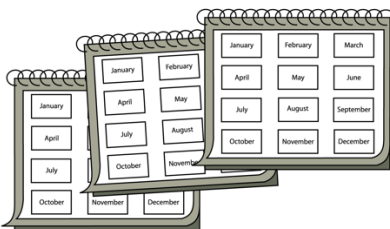


Lee

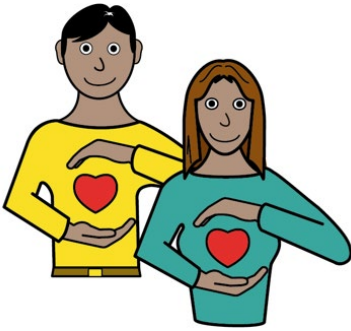
Participant Welfare Officer

## How long does the role go for

1 Year.



## Our Values



Mercy Connect follows values that help us support people with care and respect.

We aim to be good today, but better tomorrow.

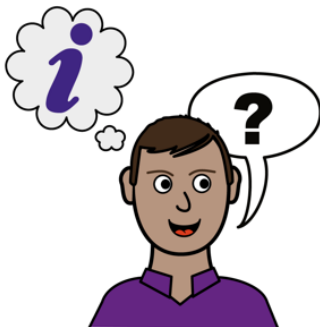
## About you



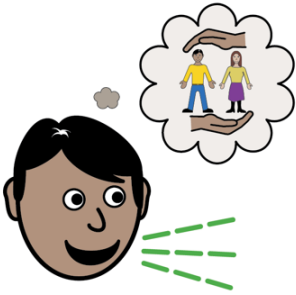
- Identify as a person living with disability



- Want to help improve services for people with disability.



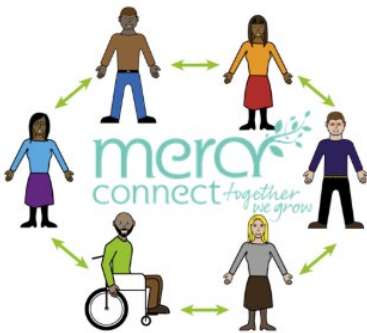
- Be willing to share your experiences.



- Be comfortable giving honest and helpful feedback.



- Be able to work with others as part of a team.



People who currently use or have used Mercy Connect services are encouraged to join.

## What will you do



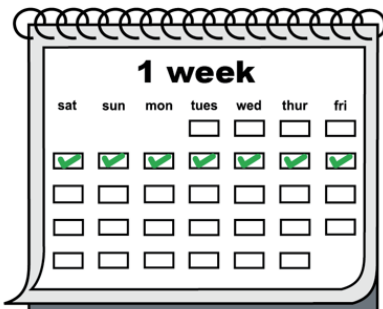
Meet **three times a year.**



Each meeting goes for **1.5 hours**.



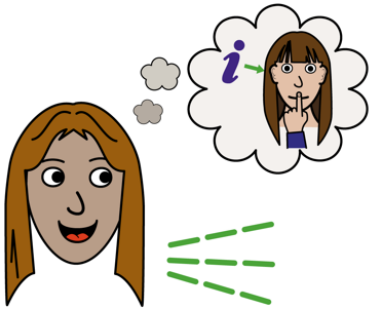
There will be breaks during the meeting.



Agendas are sent one week before the Meeting.

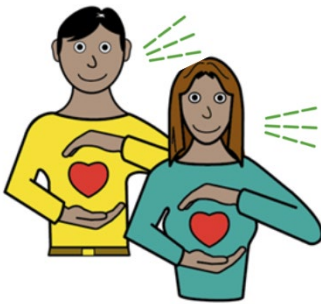


You will need to read the information before the meeting.



Keep all private information confidential.

This means information is not shared outside  
Of the group meeting.



Share feedback in a respectful way.



Complete surveys or interviews to help Mercy

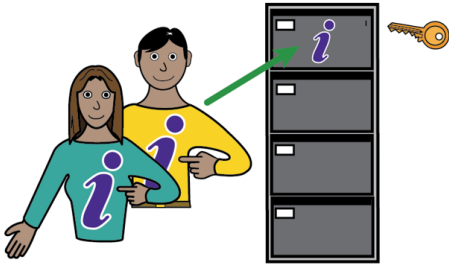
Connect improve our services.



You will receive a **\$50 gift card** for each

meeting you attend.

## Privacy



Personal information you share will be kept

Private.



Your name will not be used unless you give

permission.